



ACCESS YOUR POTENTIAL



UAC 2020 GOES LIVE WITH THE NEW UNIVERSITY INFORMATION ON APRIL 1, 2020.

Please read the following information carefully.

Year 12 students will receive their UAC PIN via email when applications open on April 1st.

Please remember that these may be sent out in stages and may not all arrive at once. Although there are expected to be more courses available from April than last year for students to list on their UAC application, some institutions such as UTS and WSU will be waiting until August to release theirs. You are advised to register and put in your selections. You can then make adjustment or changes to your preference list later in the year once the chosen courses become available.

You must use your Year 12 Student Number and UAC PIN to apply so that you can be identified as a Year 12 student. Keep these numbers safe.

Ideally, you should begin your UAC application as early as possible to ensure that you are not trying to make such an important decision during your study period and HSC exams.

Hopefully, the COVID-19 pandemic will be over by the August/September university Open Days period. We will keep you posted if any alternatives such as Virtual Tours become available.

The best place to start your UAC journey is here: <https://www.uac.edu.au/future-applicants>

COVID-19: NESA/UAC

UAC have been asked about EAS and COVID 19. This situation is affecting all HSC students and NESA will put procedures in place in order to combat the disruptions to students' study if needed. If the total Year 12 population shows weaker results, then university entry will reflect this, and no student will be disadvantaged.

At this stage, COVID 19 is not covered specifically under EAS as the disadvantage must be long term. It would be expected that students who become ill through infection, will not last for six months or longer. UAC understands the disruption that is occurring to everyone and would always advise students to apply for EAS if they meet the criteria for any EAS disadvantage if applicable.

The HSC is going ahead in 2020.

A COVID-19 Response Committee is addressing developing issues as a matter of urgency.

NESA advice to students:

- Keep learning, do your assessments, make progress on your major projects.
- Look after yourself, whether you are at school or at home.
- Reach out to family, friends and your teachers if you need to.
- Go to UAC COVID-19 updates for information about entering university in 2021.
- The UAC call centre is standing by to take calls on 1300 275 822 Monday to Friday 8.30am to 4.30pm. Livechat and email through the website will also be available.

EAS – NEW DISADVANTAGE CATEGORY FOR NATURAL DISASTERS

A new disadvantage has been added to EAS which can only be added or applied for from August 2020: **N01D: Natural disasters.**

What you need to do:

1. Complete the applicant statement of this form.
2. Arrange for the educational impact statement to be completed.
3. Collect all relevant documents outlined under 'Documentation required'.
4. Upload this completed form and documents to your EAS application, as soon as possible.
5. If you need more room to write your statement, use a separate sheet of paper.
6. Your application can't be assessed until your supporting documents have been uploaded.
7. Any hard copies of documents received by UAC will be scanned then destroyed.

Eligibility criteria:

Your education has been negatively impacted during Year 11 and/or 12 (or equivalent) due to the impact of a natural disaster. Natural disasters in Australia can include but are not limited to: heatwaves, bushfires, droughts, floods, severe storms and tropical cyclones, earthquakes, tsunamis and landslides. The address on any payments made to parent/s (or guardian/s) must match the applicant address within UAC system for a positive assessment.

Documentation required

- Educational impact statement N01D
- Applicants must provide evidence of any disaster relief payments or other payments from a State or Federal government body related to the specific natural disaster.
- These payments can be to the applicant themselves, or
- The applicants' parent/s (or guardian/s) – in this case the address to which the payment has been made, must match the applicants address.
- Applicants, or applicants' parent/s (or guardian/s) who have not received a disaster relief payment, or other payments from a government body related to the specific natural disaster can still apply. The burden of proving the educational impact will be incumbent upon the applicant and will have to reach the same level as applicants who received payments.

This evidence to support your claim can be in the form of:

- Insurance documents
- SES reports
- Bank documents and/or
- Government documentation.

EAS - Educational Impact Statements:

The information required to achieve a positive outcome from an educational impact statement must include:

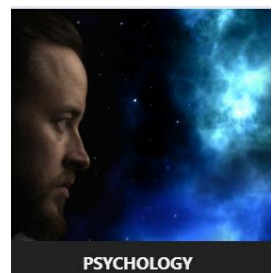
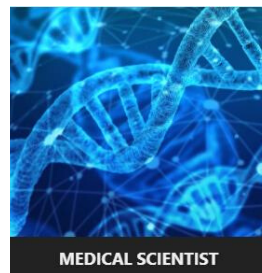
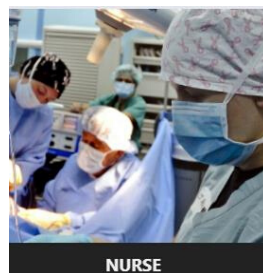
- **Dates:** from beginning to end of disadvantage that you know about.
- **Time:** length of the impact on the student.
- **Impact:** specific educational impact of this disadvantage.
- **Severity:** Extreme severity is the worst-case scenario and doesn't apply to all students.

COVID-19 AND MANDATORY WORK PLACEMENT IN VET

NESA is aware of the impact of COVID-19 on the work placement service provider program, with a number of employers indicating their inability to continue providing work placement opportunities at this time.

NESA is working with the school/TAFE sectors regarding possible interim arrangements, and will provide further advice shortly.

SELECTING YOUR UNIVERSITY COURSES



In the past, UAC has provided Guide books with a description of each degree course and its entry requirements. However, the new Guide only contains the university's course name and codes with minimal information.

To make your research and preference selection easier, Colo High School uses the Jobjump website. This site lists all University degree courses and enables you to link directly to UAC and to each university's website.

Under the **ATAR** tab you will be able to see courses, ATARs, prerequisites/ assumed knowledge/ recommended studies and bank up to 20 of your favourite degrees.

- In year 10 you should have registered at Jobjump.
- If not, log in at: <https://www.jobjump.com.au/>
- Use your personal email rather than your Department one so that you have access throughout Year 13.
- The password is: colo
- Watch the video on how to use the ATAR tab on <https://jobjump.com.au/helpVideo?video=myAtar>



Under the **Uni** tab you will find information and links to School Recommendation Scheme (SRS), Education Access Scheme (EAS), Adjustment Factors, deferment, alternative entry and more. Make sure you understand the terminology used by UAC and each university. Also be aware that each university has different courses, with different entry requirements and rules and these can change from year to year.

It's a good idea to check that the university and UAC information match. If not, make sure that you are looking at the correct UAC/Uni code.

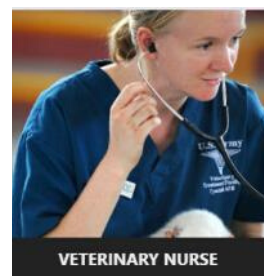
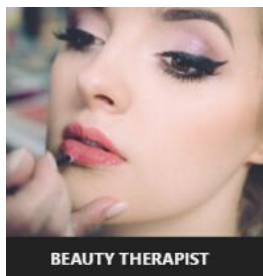
CONSIDERING A CAREER IN MEDICINE?

Don't forget that you may need to sit a mandatory UCAT if you are entering the Medicine/Medical Science field. It is important that you check your degree requirements at the university you are selecting. You will find important information regarding the current COVID-19 impact on the UCAT here: <https://www.medentry.edu.au/ucat/entry/covid-19-and-ucat-2020-what-should-i-do>

Remember that it is your responsibility to ensure that you have registered for UCAT regardless of the current situation.

The following link contains information for universities requiring UCAT testing but please ensure that you check each individually for updates or changes: <https://www.medentry.edu.au/resources/links/university-admissions>

NOT INTERESTED IN UNI?



TAFE as a Further Study Option or Pathway to Uni

Jobjump's **TAFE** tab contains links to all the Certification and Diploma courses available across NSW through regional colleges.

You will find a range of helpful links such as Counselling and Career Development Services to help you select the best option as well explaining how to take your TAFE Diploma studies through to a university degree.

SHOULD I STUDY AT A PRIVATE COLLEGE?

There is a wide range of private colleges available. These offer courses in specialised areas such as Hospitality, Animation, Film Production, Childcare, Business and much more.

The Good Universities website has key information on studying at Private Colleges:

<https://www.gooduniversitiesguide.com.au/study-information/types-of-institutions/private-providers>

Centrelink may be able to assist you in payment for your training. Payments are in many instances, in accordance to asset tests and may also be determined based on the number of hours undertaken. These may include: Youth allowance, Austudy, Newstart, and Abstudy.

You should discuss your own personal circumstances and opportunities with your local Centrelink office. Or visit:

<https://www.servicesaustralia.gov.au/individuals/services/centrelink/austudy/who-can-get-it/approved-courses-and-institutions>

Further updates and information will be posted as soon as it becomes available.